

# Sound Symposium XXII Accessibility Information

## LSPU Hall

*3 Victoria St, St. John's, NL A1C 3V2*

**Venue Capacity (Main Stage):** 192

**Venue Capacity (Second Space)**

- Standing-only: up to 80
- Theatre-style with risers: up to 40
- Bistro-style with tables: up to 28
- Board-room style: up to 20

**Age Restrictions:** All ages

### Parking

- There is an accessible parking spot right in front of the LSPU Hall.
- Free parking is available downtown on Duckworth, Water, and adjacent streets after 6 PM on weekdays and all day on weekends.
  - Note: Parking on Victoria Street is by permit only.
- There is parking for audience members in the Bluedrop parking lot on Prescott Street, north of Duckworth Street.
  - There are 60 parking spaces available.

### Accessibility

- Assistive Listening Systems are available upon request.
- A lift inside the main entrance provides access to the theatre on the second floor.
  - Staff and volunteers are available to assist with the operation of the lift.
- There are button-activated automatic door openers on the following doors:
  - The main door entering the LSPU lobby.

- The door into the Cox & Palmer Second Space.
  - The door to the large dressing room.
- The LSPU Hall will accept an “Attendant Pass” through the Access2 Program for anyone accompanying a person with disabilities. Please visit the LSPU Hall accessibility page for more information.
- Contrast painting can be found throughout the building and leading up to the theatre.
- Service animals are always welcome during any public events happening at the Hall.
  - Note: Please advise the box office when booking your seat so that an appropriate seat can be booked.
- An on-site wheelchair is available on request.

### **Washrooms**

- Gender neutral washrooms are available.

### **Resources:**

- [LSPU Hall Accessibility Page.](#)
- [Visual Guide of LSPU Hall.](#)
- [Designated accessible viewing areas/seat map.](#)

# Lawnya Vawnya Headquarters

*4 Cliff's - Baird's Cove, St. John's, NL A1C 6M9*

**Venue Capacity:** 30

**Age Restrictions:** All ages

## **Parking**

- There is parking available along Harbour Drive.
- Downtown street parking is free after 6 PM during weekdays and all day on weekends.
- Water Street from Prescott Street to Adelaide Street is closed to traffic from noon until 10 PM daily.
- There is an A.P. Parking Garage across the street from Lawnya Vawnya at 1 Cliff's - Baird's Cove. Rates for this parking garage are as follows:
  - \$2 for the first 30 minutes.
  - \$1.75 for each additional 30 minutes.
  - \$15 daily until 6 PM.
  - \$1 every 30 minutes after 6 PM.

## **Accessibility**

- There is a steep downward ramp from the sidewalk into the building.
- The door is raised approximately 1-2 inches from the ground.
- Doors must be manually opened.

## **Washrooms**

- Gender neutral (single-stall).
- Washroom doors may be too narrow for some wheelchair users.

# MUN School of Music

*Burton's Pond Rd, St. John's, NL A1C 5S7*

**Venue Capacity:** 120 (Suncor Hall), 130 (Choral room), 100 (Instrumental Room), 296 (D.F. Cook Hall), 10 (MEARL)

**Age Restrictions:** All ages

## **Parking**

- For the duration of Sound Symposium XXII, free parking in Lot 15 will be available for festival attendees.
- There are a large number of accessible parking spaces.

## **Accessibility**

- All concerts and events take place on the ground floor.
- The entrance to the building has push-button automatic doors and a wheelchair accessible entrance.
- Instrumental Room: No fixed seating (chairs can be arranged prior to events to accommodate wheelchair users).
- D.F. Cook Hall: Two wheelchair spaces at the back of the hall.
- D.F. Cook Hall: There is a ramp in the lobby leading up to the hall.

## **Washrooms**

- Washrooms are accessible.
- No public gender neutral washrooms.

# The S.P.A.C.E.

*72 Harbour Drive, St. John's, NL A1C 1B1*

**Venue Capacity:** 120

**Age Restrictions:** All ages

## **Parking**

- There is street parking all along Harbour Drive.
- Downtown street parking is free after 6 PM during weekdays and all day on weekends.
- Water Street from Prescott Street to Adelaide Street is closed to traffic from noon until 10 PM daily.
- There is an A.P. Parking Garage on Cliff's - Baird's Cove at the corner with Harbour Drive. Rates for this parking garage are as follows:
  - \$2 for the first 30 minutes.
  - \$1.75 for each additional 30 minutes.
  - \$15 daily until 6 PM.
  - \$1 every 30 minutes after 6 PM.

## **Accessibility**

- The main entrance at 72 Harbour Drive is wheelchair accessible.
  - A ramp in the front of the building leads from the outside parking lot through glass double doors (width of 71 inches).
  - The double doors lead into the main hallway of the building. The S.P.A.C.E. is located down this hallway.
- There are small elevations in the floor and a lip about 1-2" tall to enter The S.P.A.C.E.
- Some doors have to be pulled manually.
- The room is open and the floor is flat.

## Washrooms

- Two single stall gender neutral washrooms are located on the ground floor, one of which is wheelchair accessible.
- The first washroom in the hallway (width of 45 inches, 31-inch doorway). The bathroom is approximately 6 feet by 5 feet without taking the toilet, sink, and swinging door into account.
- The second washroom is wheelchair accessible, with more floor space (7 by 10.3 feet, 34-inch doorway).
  - This washroom is located down a hallway that is 104 inches long and 45.5 inches wide.
  - Note: Washroom doorways may be too narrow for some wheelchair users.

## Resources

- [A.P. Parking Garage rates.](#)
- [The S.P.A.C.E. website.](#)

# The Ship Pub

*265 Duckworth St, St. John's, NL A1C 1G9*

**Venue Capacity:** 120

**Age Restrictions:** 19+

## **Parking**

- There is street parking available above The Ship on Duckworth Street and on Harbour Drive.
- Downtown street parking is free after 6 PM during weekdays and all day on weekends.
- Water Street from Prescott Street to Adelaide Street is closed to traffic from noon until 10 PM daily.

## **Accessibility**

- Not wheelchair accessible.
  - The entrance is down a flight of stairs coming down from Duckworth Street, and up a flight of stairs coming up from Water Street.
  - Note: It is possible for somebody with access needs to come through a side door. Please get in touch in advance with [office@soundsymposium.com](mailto:office@soundsymposium.com) if you wish to avail of assistance or for more specific information.

## **Washrooms**

- No accessible or gender neutral washrooms.

# Anglican Cathedral

*16 Church Hill, St. John's, NL A1B 4J9*

**Venue Capacity:** 500

**Age Restrictions:** All ages

## **Parking**

- Parking lot on the South side of the Cathedral
  - Note: Limited on weekdays.
- On-street parking on Church Hill and Cathedral Street.
- Parking garage on Duckworth Street.

## **Accessibility**

- Accessible through the main entrance on Gower Street.
- Spaces for wheelchairs and strollers within the Nave of the Cathedral.

## **Washrooms**

- Gender-neutral washroom.
- Accessible washroom on the main floor of the Cathedral (behind the Labyrinth).

# First Light Centre for Performance and Creativity

*81 Cochrane St, St. John's, NL A1C 3L7*

**Venue Capacity:** 550 fire capacity (including performers & staff), 400 seated (comfortable audience capacity) (Performance Space)

**Age Restrictions:** All ages

## **Parking**

- No dedicated parking lot.
- On-street parking is available year round on Military Road and Bannerman Road, and seasonal on-street parking between April and November throughout the neighbourhood.
- For blue-zone pass holders, there is one accessible parking space on the ramp that leads up to the front doors.

## **Accessibility**

- Recently upgraded ramp to main doors.
  - Note: Doors do not have push buttons.
- Staff are always available to assist with the door during events.
  - Guests can knock on arrival or are welcome to contact the venue ahead of time to let them know about accommodations.
- Floor seating is all one level with a gentle downward slope leading to the front of the space.
- One row of seating with extra leg room that the venue designates as "accessible seating" because it has more room for placement of mobility aids.
  - Note: The balcony seating area is only accessible via staircase.

## **Washrooms**

- There is a ramp to the washroom area, although there is a small lip at the base of the ramp and on a door leading to the washroom.

- All doors to access the washroom are button operated to enter and lock the door.

# Bannerman Park

*Military Rd, St. John's, NL A1C 5M2*

**Capacity:** N/A

**Age Restrictions:** All ages

## **Parking**

- Accessible parking available in the designated Bannerman Park parking lot on Bannerman Road.

## **Accessibility**

- Accessible splash pad.
- Accessible playground.
- Child and adult size change tables.
- Pool lift.
- Lower service counter at the pool house.
- Water wheelchair.

## **Washrooms**

- Accessible washrooms and change spaces at the park and pool house.

# Harbourside Park

*Water Street East, St. John's, NL, A1C 5M2*

**Capacity:** N/A

**Age Restrictions:** All Ages

## **Parking**

- Available on-site and nearby.
- Accessible parking spot in front of entrance.

## **Accessibility**

- Ramps leading down to the water.
- Benches to sit at.
- Gravel on each level of the park.
  - Avoidable via ramps.

## **Washrooms**

- N/A.
  - Note: Accessible washrooms can be found one block over at the Alt Hotel.

# New H.G.R. Mews Community Centre

*60 Blackler Avenue, St. John's, NL A1E 3E7*

**Venue Capacity:** 120 (Swimmers).

**Age Restrictions:** All ages (Children 10 and under must be accompanied in the water by a 16+ year-old supervisor who must remain within arm's length; a maximum of three children is permitted per supervisor)

## **Parking**

- Accessible parking and drop off (10 spaces, as well as a van stall).

## **Accessibility**

- Automated entrance.
- Adult size change table.
- Child size change tables.
- Elevator.
- Courtesy wheelchair.
- Lower service counter.
- Assistive listening device.
- Large print wayfinding signage with text, symbols and Braille in a matte finish.
- Color contrasting transition edging on the stairs.
- Private customer service area available upon request.
- Child protection seats in changing area.
- Zero depth beach entry to leisure pool.
- Ramped entry to lap pool.
- Water wheelchair.
- Canadian Tire Jumpstart Inclusive Playground.
- Accessible community garden.

## **Washrooms**

- Inclusive and accessible gender neutral changerooms and separate male and female changerooms are located near the main pool.

# Eastern Edge

*72 Harbour Dr, St. John's, NL A1C 6K1*

**Venue Capacity:**

**Age Restrictions:**

**Parking**

- Downtown paid parking.

**Accessibility**

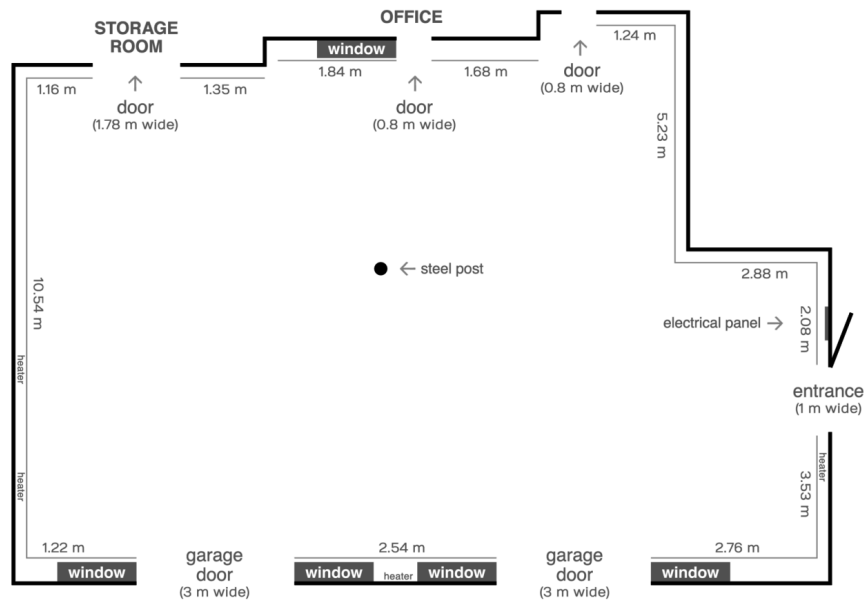
- Entrances leading to the gallery have buttons to press to open the doors automatically.
- As you enter the building, pushbuttons are located to the right of the outside door and gallery door.
- Guests can also find pushbuttons to the left of the studio door.
- When exiting both spaces, the buttons in the gallery are on the left; in the studio, the button is on the right, and for the main door, the button is to the left.
- A ramp in the front of the building leads from the outside parking lot through glass double doors (width of 71 inches). They lead into the main hallway of the building, where you will find the black double doors (width of 63.5 inches) leading to Eastern Edge Gallery on your immediate right.
- In front of these doors is a slight ramp. The bathroom is just to the left of the hallway (width of 45 inches), and the door is 31 inches wide.
- Eastern Edge Studios is located directly across the hall from Eastern Edge Gallery and on the immediate left through the front doors. The entrance to the studio space has two double doors that open inward (62 inches wide).
- EE Studio also has a garage door that is 3m wide but has a 12-inch step up from the parking lot outside.

## Washrooms

- The bathroom is a small space, approximately 6 feet by 5 feet – even less so with the toilet, sink, and swinging door is taken into account).
- The building recently added a second bathroom just beyond the first one, with more floor space, making it more accessible to our patrons (the bathroom is 7 feet by 10.3 feet, with a 34-inch doorway). This new bathroom is located down a hallway that is 104 inches long and 45.5 inches wide.

## Floor Plan

### EASTERN EDGE STUDIOS FLOOR PLAN



# Christina Parker Gallery

*50 Water St, St. John's, NL A1C 1A3*

**Venue Capacity:** 50 - 75

**Age Restrictions:** All Ages

## **Parking**

- Five spaces outside the gallery.
- Limited parking at 5 Hill of Chips or on the street on the Harvey's Marine Base side.

## **Accessibility**

- Steps leading up to the main door of the gallery.
- Ramp that a person in a wheel chair could use with assistance.

## **Washrooms**

- Wheel chair accessible bathroom.